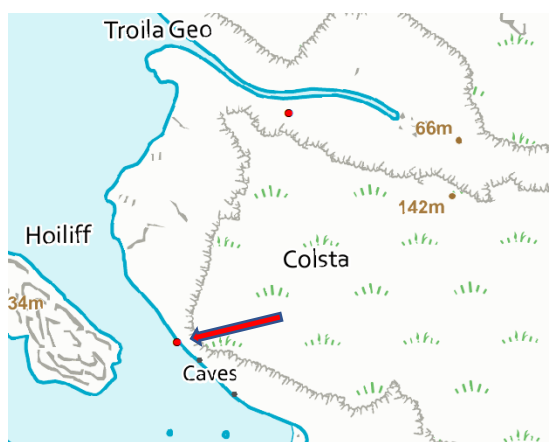


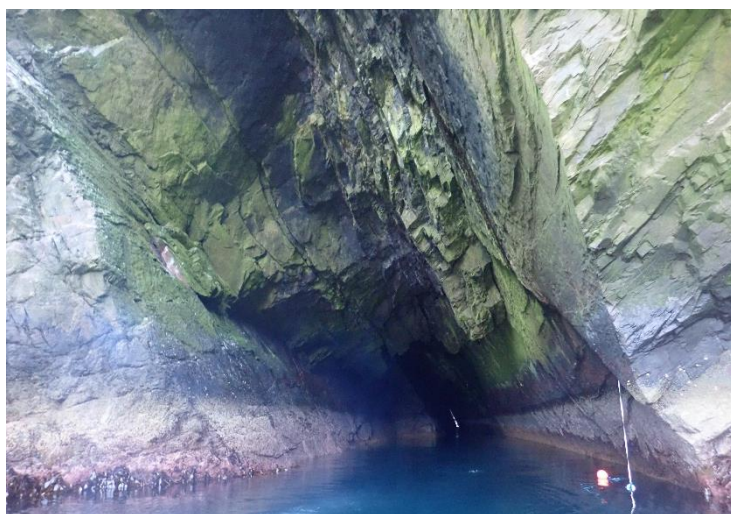
## Annex 2D FI21CV04 - The Diamond cave (Colsta) - South entrance

### Cave relocation sheet

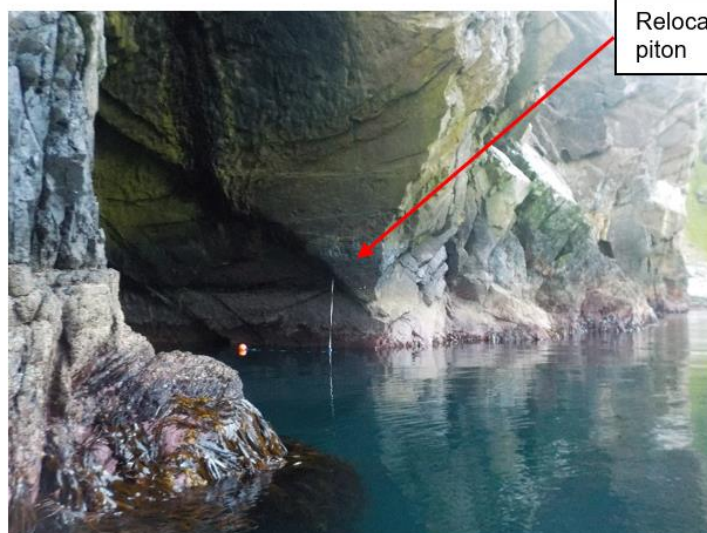
Cave name	The Diamond cave (Colsta) - South entrance
Site code	FI21CV04 ('CI66')
Position of entrance	59.534480° N 1.644924° W
How start point is marked	Galvanised relocation piton in eastern (right) wall at the point of roof closure. Positioned in inconspicuous fissure directly above the apex of an obvious inverted 'V' feature in the rock surface. Piton at ~2.7 m ACD.
Notes on relocation	Entrance is obvious and lies at the base of the cliffs on the SW side of Colsta. Use rock features noted above and on images to identify piton placement.
Access	By boat.



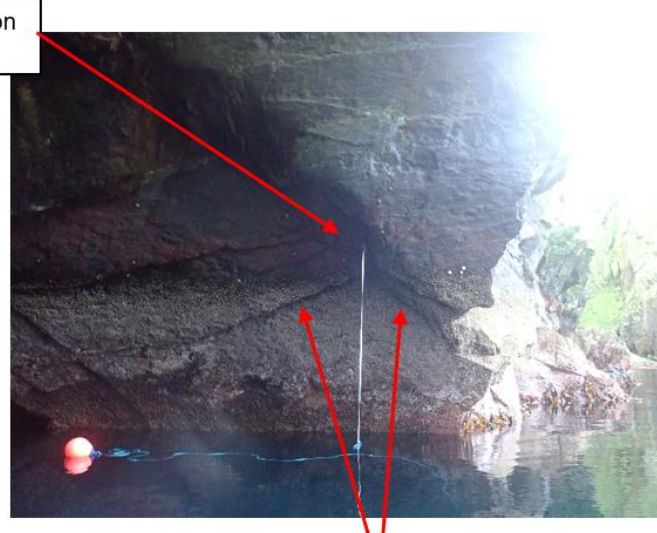
(© Crown copyright and database rights [2022]  
Ordnance Survey 100017908)



View of entrance from boat a short distance from shore.  
Tidal rise ~0.7 m



Rock features at piton placement  
Tidal rise ~0.7 m



Rock feature forming  
inverted 'V' shape

### Cave datum line relocation information

Cave name	The Diamond cave (Colsta) - South entrance
Site code	FI21CV04 ('CI66')
Position of piton 1	Almost directly below relocation piton. Distance of 10.7 m from relocation piton. Bearing 30°, depth 7.9 m BCD.

**Note** – Time constraints prevented the detailed survey extending the full length of the cave. However, a snorkeller swam through to the northern entrance and noted passage shape and bearing was consistent for the length of the cave and a cobble beach was present at the northern entrance.

Piton number	Depth of Piton (metres below chart datum)	Distance (m) to next piton	Distance (m) on tape	Bearing (degrees magnetic) to next piton
Piton 1 (shot weight)	7.9	14	0	30
Piton 2 (snoopy on cobble)	7.3	31	14	25
Piton 3 (not attached)	5.7	40	45	25
Piton 4 (not attached)	5.3	15	85	25
Piton 5 (reel on boulders)	3.4	N/A	100	N/A



Piton 1 (Line attached to shot weight)



Piton 2 (snoopy on cobble)



Piton 3 (not attached)

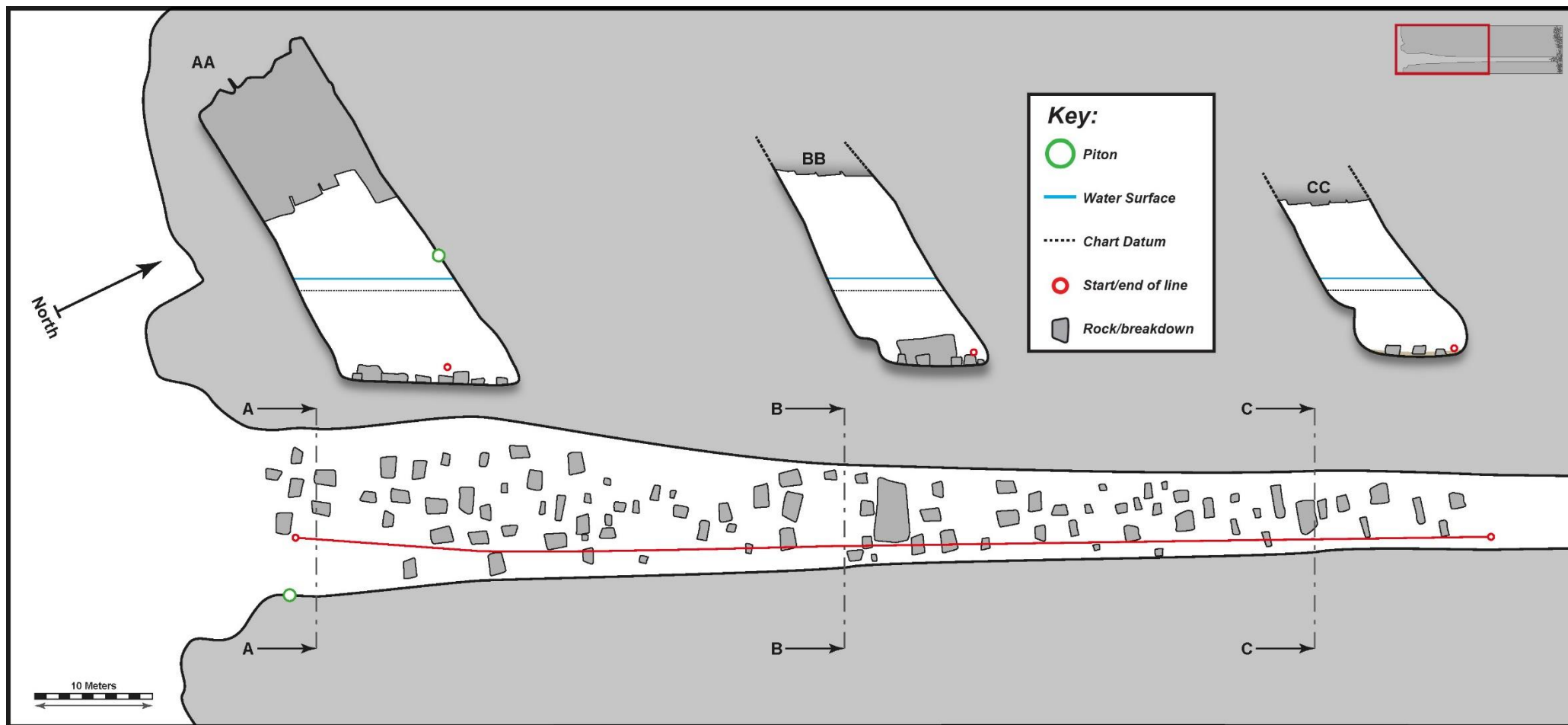


Piton 4 (not attached)



Piton 5 (reel on boulders)

FI21CV04 - The Diamond cave (Colsta) - South entrance ('CI66') – Physical survey



Scale bar applies to both floor plan and passage cross sections. 'BB' is cross section 1 and 'CC' is cross section 2. Insert shows whole cave based on snorkeller records.

**FI21CV04 - The Diamond cave (Colsta) - South entrance ('CI66') – Biological summary  
– cross section 1 (right wall, ~45 m from entrance, 45 m on tape)**

Zone	Physical notes	Upper limit (m CD)	Lower limit (m CD)	Biological notes	Biotope
1	Cave floor predominantly composed of boulders with patches (~10%) of sand and gravel.	-6.1	-6.1	Rock surfaces with sparse <i>Jassa falcata</i> tube turf (frequent), <i>Caryophyllia smithii</i> and <i>Dendrodoa grossularia</i> (both frequent, locally common). Very sparse <i>Spirorbis tridentatus</i> (rare). <i>Urticina felina</i> common between boulders.	IR.FIR.SG.CCBalPom
2	Vertical & slightly overhanging rock walls.	-5.1	-6.1	Scoured base of rock wall. <i>Spirorbis tridentatus</i> (abundant) & <i>Dendrodoa grossularia</i> (common).	IR.FIR.SG.CCBalPom
3	Vertical & slightly overhanging rock walls.	-2.1	-5.1	Lower rock wall. <i>Dendrodoa grossularia</i> (abundant) and <i>Clathrina coriacea</i> (common).	IR.FIR.SG.DenCcor
4	Vertical & slightly overhanging rock walls.	+0.9	-2.1	Upper rock wall. Mixed faunal turfs. <i>Dendrodoa grossularia</i> (occasional, locally common) and <i>Clathrina coriacea</i> (frequent). <i>Crisia eburnea</i> bryozoan turf (abundant). Other taxa becoming more prominent near the top of this zone. <i>Phellia gausapata</i> (occasional, locally abundant upper zone). <i>Tubularia indivisa</i> (frequent, locally abundant upper zone), <i>Alcyonium digitatum</i> (occasional, locally frequent upper zone).	IR.FIR.SG.CrSpAsAn
5	Vertical & slightly overhanging rock walls.	+1.4	+0.9	Intertidal rock wall. <i>Semibalanus balanoides</i> (abundant) and <i>Cylista elegans</i> (abundant).	LR.HLR.MusB.Sem
6	Vertical & slightly overhanging rock walls.	+2.9	+1.4	Intertidal rock wall. <i>Semibalanus balanoides</i> (abundant).	LR.HLR.MusB.Sem
7	Vertical & slightly overhanging rock walls.	+4.9	+2.9	Supralittoral rock wall. <i>Hildenbrandia rubra</i> (abundant).	LR.FLR.CvOv.VmucHil
8	Vertical & slightly overhanging rock walls.	>+4.9	+4.9	Supralittoral rock wall. Green algal stains (abundant).	LR.FLR.CvOv.VmucHil

**FI21CV04 - The Diamond cave (Colsta) - South entrance ('CI66') – Biological summary  
– cross section 2 (right wall, ~85 m from entrance, 85 m on tape)**

Zone	Physical notes	Upper limit (m CD)	Lower limit (m CD)	Biological notes	Biotope
1	Cave floor predominantly composed of rippled sand with scattered boulders (~10%).	-5.1	-5.1	Bare sand and scoured boulders. <i>Actinia equina</i> (occasional, locally frequent). <i>Jassa falcata</i> tube turf (rare).	IR.FIR.SG.CC.Mo
2	Vertical & slightly overhanging rock walls.	-4.6	-5.1	Scoured base of rock wall. <i>Dendrodoa grossularia</i> (common). <i>Cylista elegans</i> (frequent). <i>Jassa falcata</i> tube turf (occasional), Bryozoan crusts (occasional). <i>Spirorbis tridentatus</i> (rare).	IR.FIR.SG.CCBalPom
3	Vertical & slightly overhanging rock walls.	-4.1	-4.6	Scoured base of rock wall. <i>Dendrodoa grossularia</i> (common). <i>Jassa falcata</i> tube turf (common, locally abundant in upper zone). <i>Spirorbis tridentatus</i> (frequent). Bryozoan crusts (occasional), hydroid turf (occasional).	IR.FIR.SG.CCBalPom
4	Vertical & slightly overhanging rock walls.	-1.1	-4.1	Lower rock wall. <i>Dendrodoa grossularia</i> (superabundant) and <i>Clathrina coriacea</i> (common). Tubularia indivisa (rare, locally frequent in upper zone).	IR.FIR.SG.DenCcor
5	Vertical & slightly overhanging rock walls.	+0.9	-1.1	Upper rock wall. Mixed faunal turfs. <i>Dendrodoa grossularia</i> (common) and <i>Clathrina coriacea</i> (occasional). <i>Cylista elegans</i> (common). <i>Phellia gausapata</i> (rare, locally abundant). Tubularia indivisa (frequent).	IR.FIR.SG.CrSpAsAn
6	Vertical & slightly overhanging rock walls.	+1.7	+0.9	Intertidal rock wall. <i>Semibalanus balanoides</i> (superabundant) and <i>Cylista elegans</i> (common).	LR.HLR.MusB.Sem
7	Vertical & slightly overhanging rock walls.	+2.9	+1.7	Intertidal rock wall. <i>Semibalanus balanoides</i> (abundant). <i>Actinia equina</i> (frequent).	LR.HLR.MusB.Sem
8	Vertical & slightly overhanging rock walls.	>+2.9	+2.9	Supralittoral rock wall. Bare rock.	Bare rock.