

Annex 2C FI21CV03 - North Haven west cave 3

Cave relocation sheet

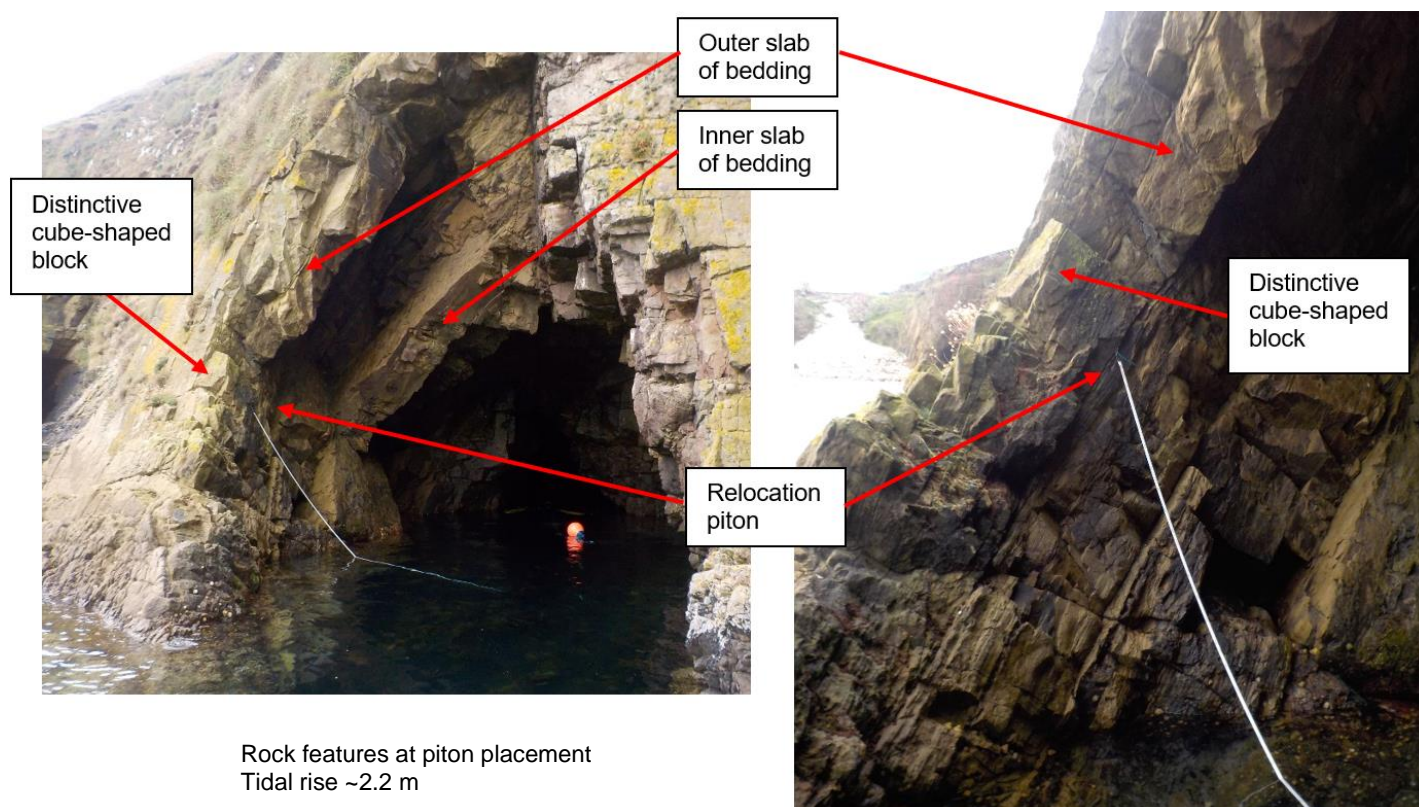
Cave name	North Haven west cave 3
Site code	FI21CV03 ('CI01')
Position of entrance	59.538444° N 1.605938° W
How start point is marked	Galvanised relocation piton in southern (left) wall at the point of roof closure. Positioned in sloping fissure below the outermost of 2 large bedding slabs that form part of the left side of the ceiling. A distinctive cube shaped rock is just outside and above the piton. Piton at ~3.9 m ACD.
Notes on relocation	Entrance is obvious and lies ~50 m north of the SW corner of the shore at the back (south) of North Haven. Use rock features noted above and on images to identify piton placement.
Access	By boat.



(© Crown copyright and database rights [2022]
Ordnance Survey 100017908)



View of entrance from boat a short distance from shore.
Tidal rise ~0.9 m



Rock features at piton placement
Tidal rise ~2.2 m

Cave datum line relocation information

Cave name	North Haven west cave 3
Site code	FI21CV03 ('CI01')
Position of piton 1	Shotline in centre of entrance. Distance of 5 m from relocation piton. Bearing 210°, depth 0.1 m ACD.

Note – Two lines were laid. Both started from the shotline at entrance. The first line ran from the entrance to the end of the western 'main passage'. The second line ran from the entrance to the end of the northern 'side passage'.

First line – From entrance to end of western 'main passage'.

Piton number	Depth of Piton (metres below chart datum)	Distance (m) to next piton	Distance (m) on tape	Bearing (degrees magnetic) to next piton
Piton 1 (shot weight)	0.1 ACD	10	0	260
Piton 2 (not fixed)	1.1 ACD	7	10	270
Piton 3 (reel on pebbles)	>1.0 ACD	N/A	17	N/A

Second line – From entrance to end of the northern 'side passage'.

Piton number	Depth of Piton (metres below chart datum)	Distance (m) to next piton	Distance (m) on tape	Bearing (degrees magnetic) to next piton
Piton 1 (shot weight)	0.1 ACD	6	0	320
Piton 2 (not fixed)	1.1 ACD	10	6	330
Piton 3 (reel on pebbles)	>1.0 ACD	N/A	16	N/A



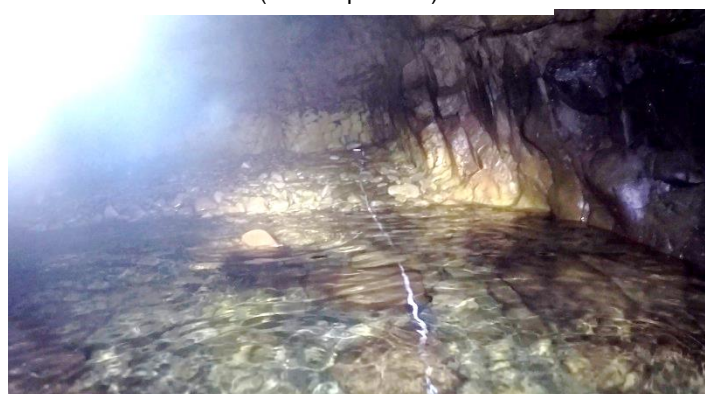
First & second lines. Piton 1 (Line attached to shot weight)



First line. Piton 3 (reel on pebbles)

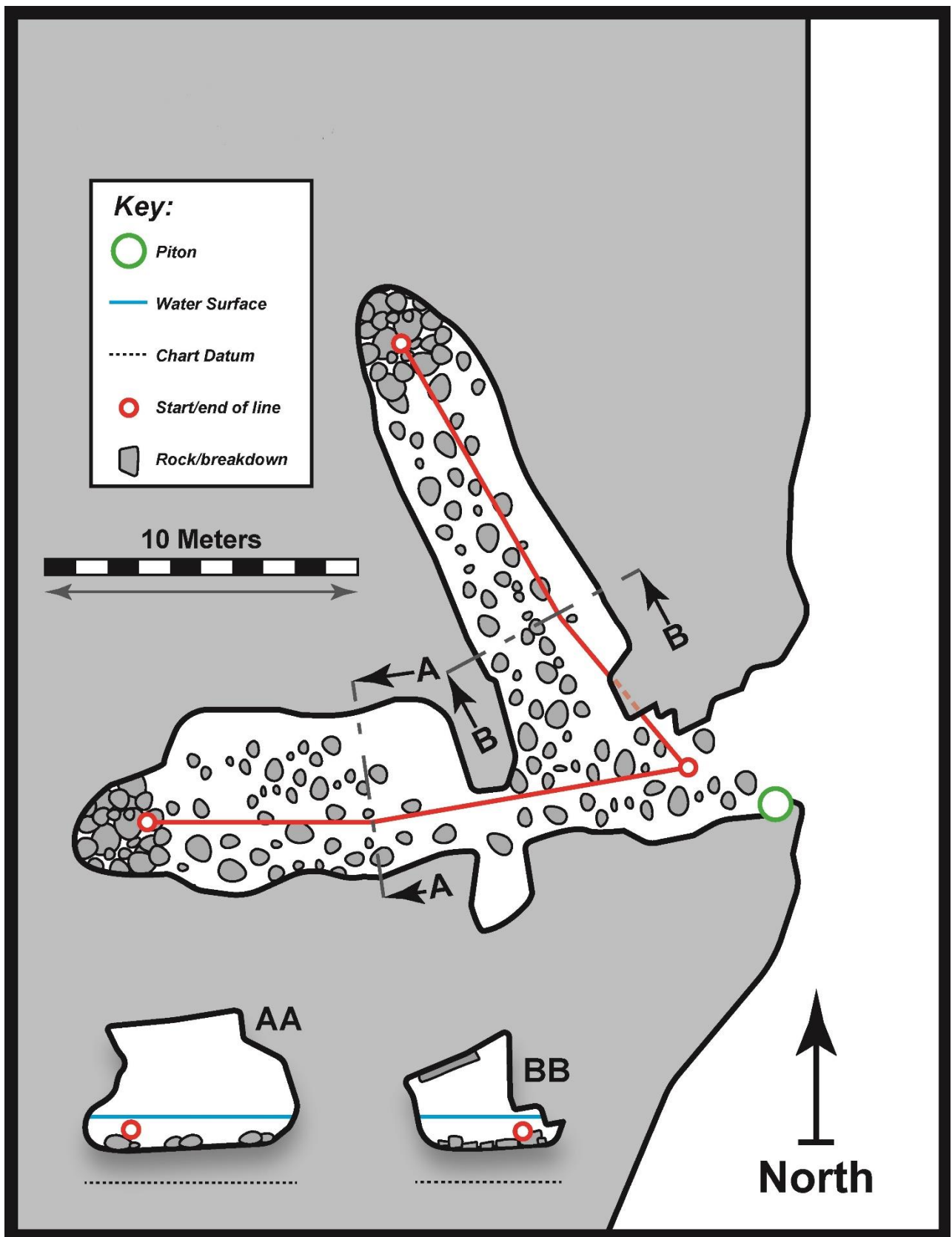


Second line. Piton 2 (not fixed)



Second line. Piton 3 (reel on pebbles)

FI21CV03 - North Haven west cave 3 ('CI01') – Physical survey



Scale bar applies to both floor plan and passage cross sections. 'BB' is cross section 1.

**FI21CV03 - North Haven west cave 3 ('CI01') – Biological summary – cross section 1
(right wall, ~7 m from entrance, 6 m on right hand tape)**

Zone	Physical notes	Upper limit (m CD)	Lower limit (m CD)	Biological notes	Biotope
1	Cave floor of boulders & cobbles.	+1.0	+1.0	Sparse <i>Fabricia stellaris</i> tube turf (common) and patches of <i>Halichondria panicea</i> (frequent).	LR.FLR.CvOv (not a clear match to any biotope, closest to LR.FLR.CvOv.FaCr)
2	Vertical rock wall.	+2.0	+1.0	Locally dense <i>Fabricia stellaris</i> tube turf (abundant) and patches of <i>Leuconia johnstoni</i> (frequent) in lower part of the zone. <i>Actinia equina</i> locally common in upper part of the zone.	LR.FLR.CvOv (not a clear match to any biotope, closest to LR.FLR.CvOv.FaCr)
3	Vertical rock wall & ceiling.	>+2.0	+2.0	Sparse patches of cave mould (rare).	LR.FLR.CvOv (no matching biotope)