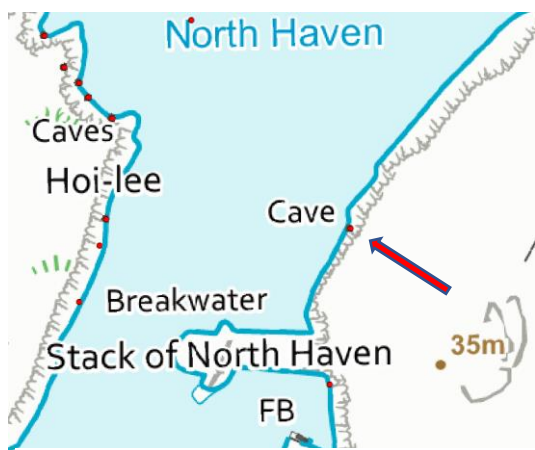


## Annex 2B FI21CV02 - Bunes, Nort gabel

### Cave relocation sheet

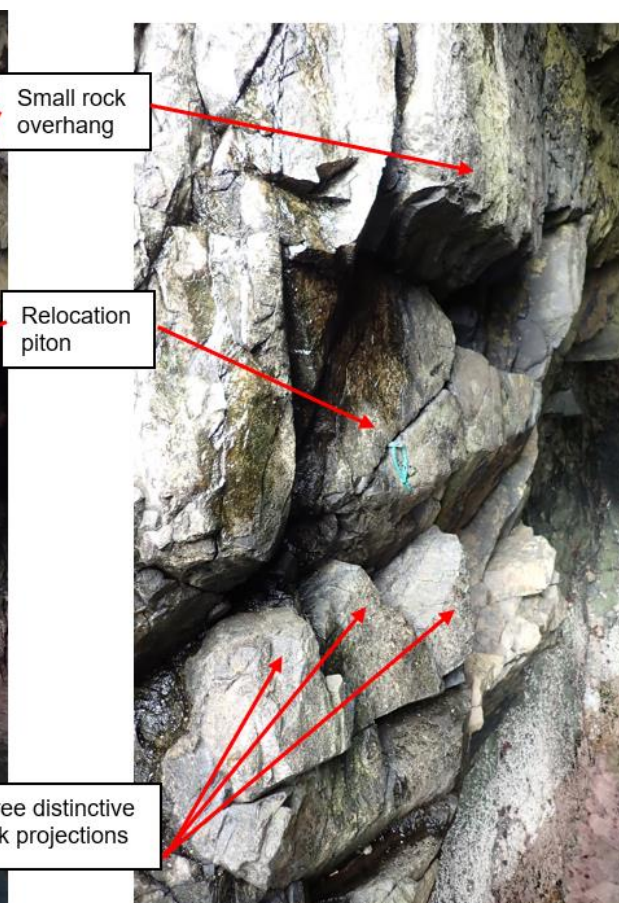
Cave name	Bunes, Nort gabel
Site code	FI21CV02 ('CI04')
Position of entrance	59.539550° N 1.602510° W
How start point is marked	Galvanised relocation piton in northern (left) wall at the point of roof closure. Positioned in sloping fissure below small overhang and above 3 distinctive rock projections. Piton at ~3.7 m ACD.
Notes on relocation	Entrance is obvious and lies ~50 m north of the breakwater that forms the NE boundary of the harbour at North Haven. Use rock features noted above and on images to identify piton placement.
Access	By boat.



(© Crown copyright and database rights [2022]  
Ordnance Survey 100017908)



View of entrance from boat a short distance from shore.  
Tidal rise ~1.3 m



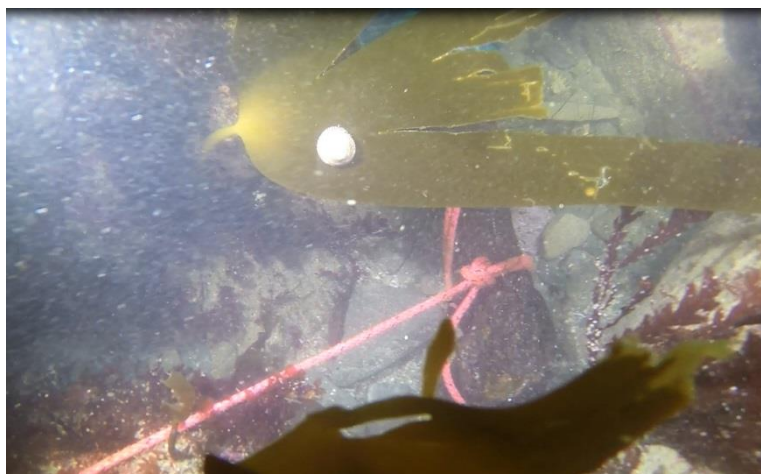
Rock features at piton placement  
Tidal rise ~1.2 m

### Cave datum line relocation information

Cave name	Buness, Nort gabel
Site code	FI21CV02 ('CI04')
Position of piton 1	Position of shotline at the centre of the entrance directly below where the cave roof begins. Distance of 7.9 m from relocation piton. Bearing 315°, depth 2.8 m BCD.

**Note** – Low visibility and wave surge prevented the detailed survey extending beyond 20 m into the cave. However, during an earlier recce visit a tape measure was extended along the length of the cave by a snorkeller. The snorkeller noted passage shape and bearing was consistent for the length of the cave and a cobble beach was present at the back.

Piton number	Depth of Piton (metres below chart datum)	Distance (m) to next piton	Distance (m) on tape	Bearing (degrees magnetic) to next piton
Piton 1 (shot weight)	2.8	20	0	40
Piton 2 (snoopy on cobble)	1.4	N/A	20	N/A

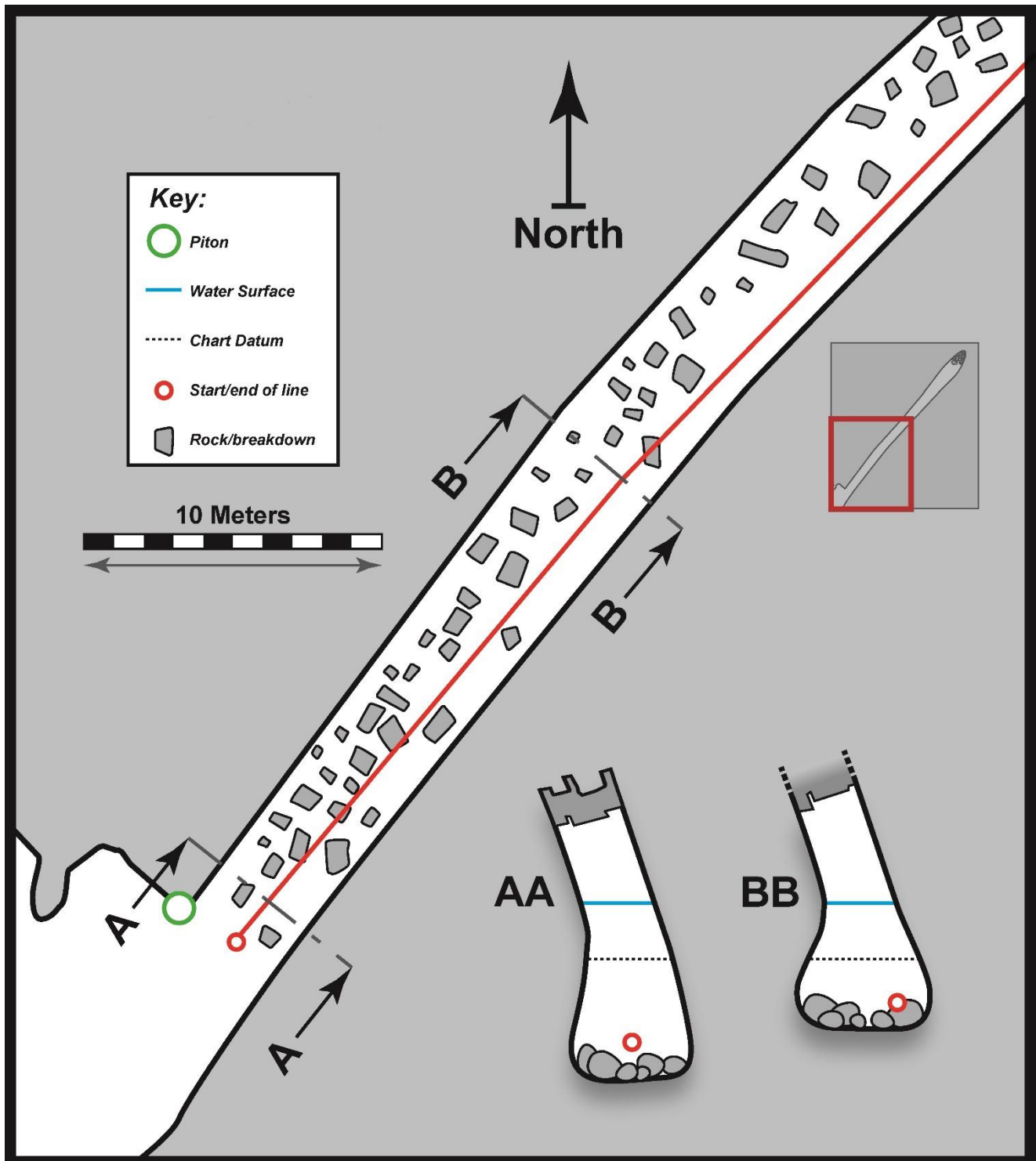


Piton 1 (shot weight)



Piton 2 (snoopy on cobble)

FI21CV02 - Bunes, Nort gabel ('CI04') – Physical survey



Scale bar applies to both floor plan and passage cross sections 'BB' is cross section 1.  
Insert shows whole cave based on snorkeller records.

**FI21CV02 - Bunes, Nort gabel ('CI04') – Biological summary – cross section 1 (right wall, ~20 m from entrance, 20 m on tape)**

Zone	Physical notes	Upper limit (m CD)	Lower limit (m CD)	Biological notes	Biotope
1	Cave floor of rounded boulders and cobbles. Including some very large stable boulders.	-1.9	-2.4	Tube turf (predominantly <i>Jassa falcata</i> based on samples) abundant and locally superabundant on larger boulders. <i>Dendrodoa grossularia</i> frequent and locally abundant on larger boulders. Sparse <i>Spirorbis tridentatus</i> (rare) and <i>Halisarca dujardini</i> (rare).	<b>IR.FIR.SG.CC.BalPom</b>
2	Vertical & slightly overhanging rock walls.	-0.4	-2.4	Tube turf (predominantly <i>Jassa falcata</i> based on samples) abundant. <i>Dendrodoa grossularia</i> common (locally abundant in some areas). Sparse <i>Spirorbis tridentatus</i> (rare) but locally occasional on lower wall. <i>Halichondria</i> (rare).	<b>IR.FIR.SG.CC.BalPom</b>
3	Vertical & slightly overhanging rock walls.	+1.1	-0.4	Tube turf (mixed composition based on samples) superabundant. <i>Grantia compressa</i> abundant, particularly near the top of the zone. <i>Dendrodoa grossularia</i> common. <i>Halichondria</i> rare overall but frequent in upper part of zone. Sparse <i>Spirorbis tridentatus</i> (rare).	<b>LR.FLR.CvOv.SpR.Den</b>
4	Vertical & slightly overhanging rock walls.	+1.6	+1.1	Tube turf (mixed composition assumed) tube turf superabundant.	<b>LR.FLR.CvOv</b> (not a clear match to any biotope, closest to <b>LR.FLR.CvOv.FaCr</b> )
5	Vertical & slightly overhanging rock walls.	+2.1	+1.6	Sparse <i>Semibalanus</i> (rare).	<b>LR.HLR.MusB.Sem</b>
6	Vertical & slightly overhanging rock walls.	>+2.1	+2.1	Algal stains. <i>Hildenbrandia</i> (common) and green algal stains (common).	<b>LR.FLR.CvOv.VmucHil</b>