

LLQ3 Area of Local Landscape Designations

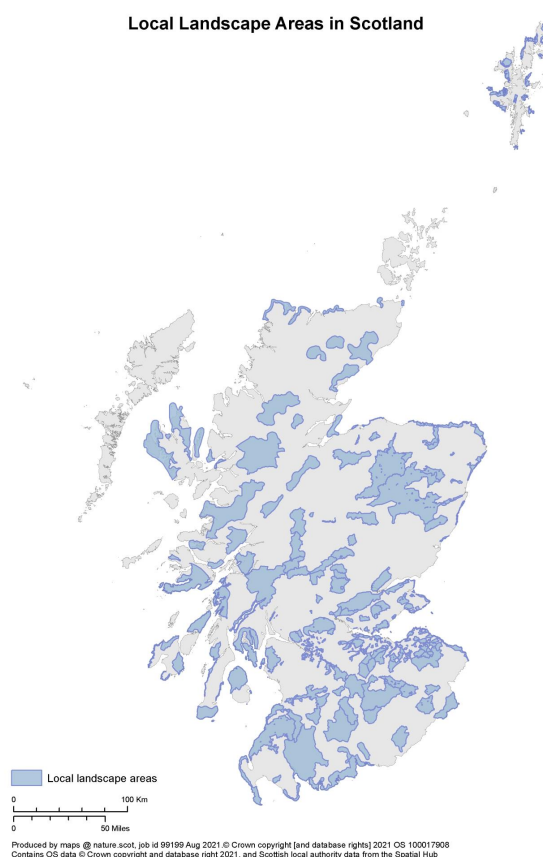
Local Landscape Areas (LLAs) are designated to safeguard and enhance the character and quality of a landscape which is valued locally or regionally. They can be used to promote understanding and awareness of the distinctive character and special qualities of local landscapes, or to safeguard and promote important local settings for outdoor recreation and tourism. This indicator assesses the extent of land covered by local landscape designations. In the past a range of different names have been used for a local landscape designation: these are all now referred to as Local Landscape Areas (LLAs).



*Duddingston Loch, Edinburgh, Special Landscape Area
Copyright Glyn Satterley/NatureScot Images*

The purpose of LLAs is set out in [Scottish Planning Policy](#). It is the responsibility of local authorities to designate them where they are used; most but not all Local Authorities have LLAs. [The European Landscape Convention](#) promotes the protection, management and planning of all landscapes, regardless of character or condition. Local landscape designations remain relevant as part of this approach. They complement the suite of [national landscape designations](#), such as National Scenic Areas (NSAs) and National Parks (NPs), and act as an important tool for safeguarding and enhancing Scotland's rich diversity of landscapes. LLAs occur across Scotland and [Local Development Plans](#) show detailed information on their location and associated policy.

The map shows locations of Local Landscape Areas in Scotland in 2017. A larger map is available at Annex 1.



Evidence

Spatial data on LLAs were sourced through the [Scottish Local Government Spatial Hub](#). In 2017, Spatial Hub completed the first assessment of all LLAs in Scotland, setting a baseline for this indicator.

Assessment

In 2017, the total area for LLAs in Scotland is 2,210,832ha. There were 502 LLAs that covered 27% (2,109,707.5ha) of the land area of Scotland to MHWS (calculated by vector analysis as 7,880,328ha), with a further 101,124.5ha extending below MHWS to include intertidal and sea areas.

Out of 32 local authorities, eight local authorities did not use LLAs in 2017. They were: Aberdeen City, Angus, Dundee City, East Renfrewshire, Inverclyde, Orkney, Renfrewshire and the Western Isles.

As this indicator sets a baseline there can be no comparisons made for assessment.

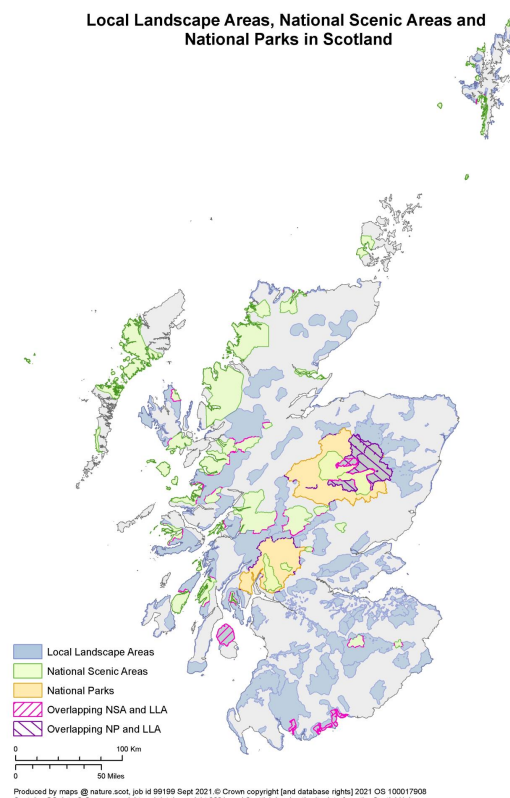
Commentary

Amongst local authorities the proportion of their areas covered by LLAs varies considerably. South Ayrshire and Midlothian councils have the greatest proportion 58.9% (two LLAs) and 58.7% (seven LLAs) respectively. North Lanarkshire with 1.7% cover (one LLA) and East Dunbartonshire with 8.6% cover (30 LLAs) have the least amount of cover. The size of LLAs also varies across local authorities, with Aberdeenshire having the largest at 178,897.37ha and Glasgow the smallest at 0.003ha. Glasgow has the most LLAs with 214 and North Lanarkshire and West Dunbartonshire both have the fewest with one LLA each.

Table 1 at Annex 2 shows the area, number and percentage of local authority area and the largest and smallest LLA within each local authority that designate LLAs in 2017.

LLAs can complement national landscape designations, such as the 40 NSAs and 2 NPs. LLAs are unnecessary within an NSA or NP, given the measures already in place to protect and manage these landscapes, although overlaps do exist. Some local authorities support NSAs and NPs by designating LLAs adjacent to them and contributing to their objectives e.g. seven LLAs adjoin the Loch Lomond and the Trossachs NP and eight adjoin the Cairngorm NP.

The map shows locations of Local Landscape Areas designated in 2017 with locations of nationally designated National Parks and National Scenic Areas. A larger map is available at Annex 3.



Gardens & Designed Landscapes, Battlefields and Scheduled Monuments are national cultural designations that can contribute to the quality and value of LLAs. For example, a disproportionate area of Gardens & Designed Landscapes overlaps with LLAs (43%) compared to the 27% of land covered by LLAs overall. Natural designations, such as national Sites of Special Scientific Interest (SSSIs) and Geological Conservation Review sites (GCRs), can also contribute to quality and value of LLAs.

There are a number of other aspects that can be considered. For example, the percentage of the coastline of Scotland that is covered by LLAs is 4,982.1km, which is 26% of the entire coastline and 39% of the coastline of the non-landlocked local authorities who designated LLAs. This indicates the relative value we place on the coast. For the local authorities that designate LLAs, the percentage of their urban areas covered by LLAs is 5% and the percentage of rural areas covered by LLAs is 30% (urban and rural areas are defined by the [Scottish Government's urban / rural classification](#)). This shows that rural areas contribute more to LLAs than urban areas. A simple visual comparison of the spatial relationship of LLAs with our national coverage of [Landscape Character Types](#) (LCTs) reveals overall that most LLAs overlap multiple LCTs rather than follow their boundaries. This makes sense as the overlaps mean the LLAs have greater landscape variety within them. Nonetheless, some LLAs do appear to have more affinity with certain LCTs in lowland areas, such as river valleys, uplands and hills that contrast with the overall lowland landscape. This again suggests that LLAs are valued for their diversity and distinctiveness.

Source data and updates

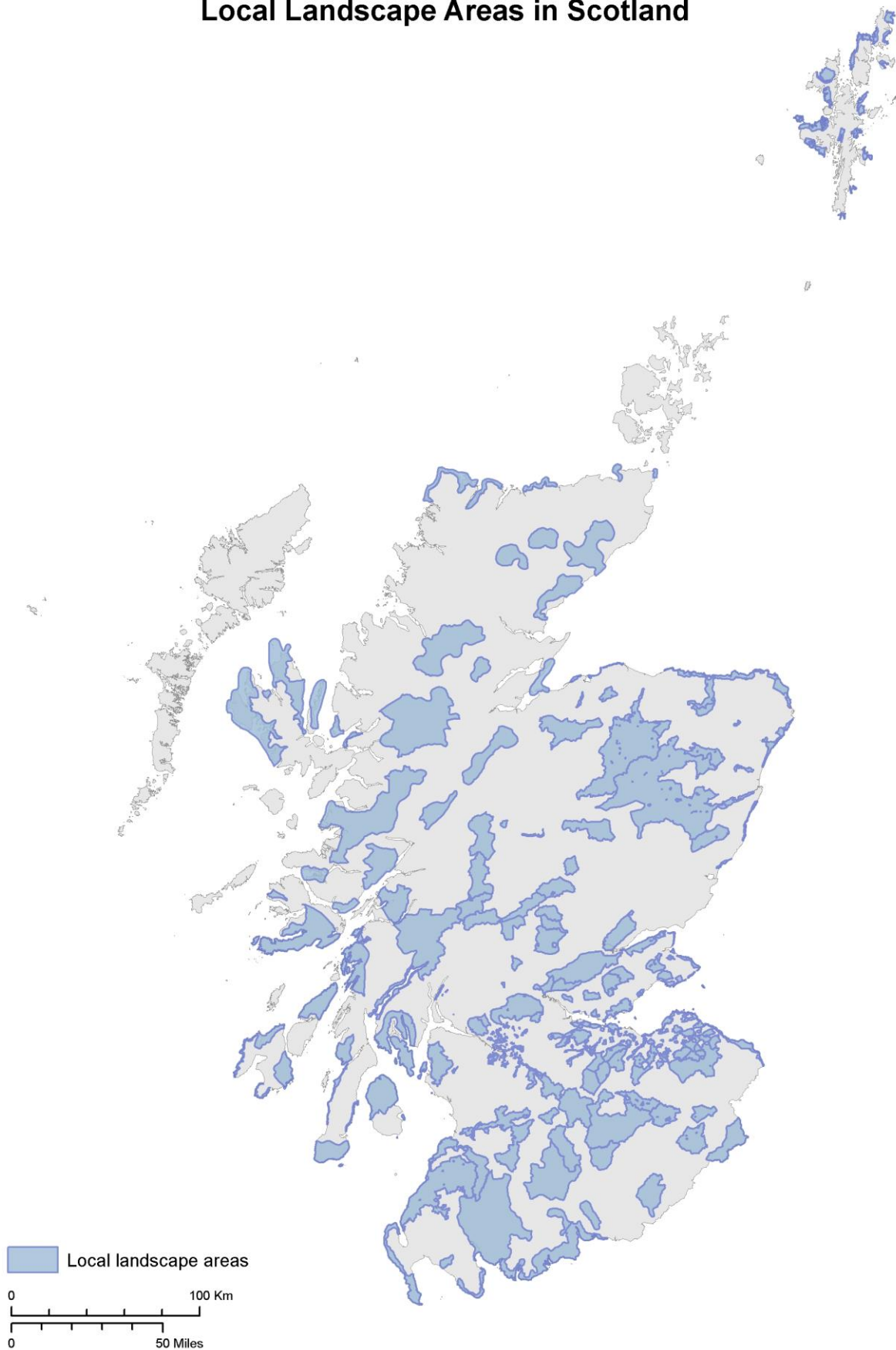
Spatial data on Local Landscape Areas were sourced from [Spatial Hub](#). This Indicator will next be reviewed in 2023.

UK indicators

There is no directly comparable UK indicator. In England and Northern Ireland, county councils tend to use Landscape Character Assessments to manage local landscape change. In England these are informed by [Natural England's National Character Area Profiles](#). In Wales, [LANDMAP](#) is used by Natural Resources Wales to set a baseline and support the management of both national and local landscapes.

Annex 1 Map showing locations of Local Landscape Areas in Scotland in 2017

Local Landscape Areas in Scotland



Annex 2 - Table 1 shows the area, number and percentage of local authority area and the largest and smallest LLA within each local authority that designate LLAs in 2017

Local Authority	Area of LLAs (ha)	Number of LLAs	LLAs as % of Local Authority Area	Largest LLA (ha)	Smallest LLA (ha)	Trend in LLA area from 2017 baseline
Aberdeenshire	240,081.26	7	37.88	178,897.37	1,306.87	n/a
Argyll and Bute	269,141.43	16	37.57	90,787.86	58.37	n/a
City of Edinburgh	9,120.81	22	33.41	4,463.35	11.71	n/a
Clackmannanshire	7,260.50	2	44.29	6,130.22	1,130.28	n/a
Dumfries and Galloway	256,563.07	10	38.43	103,846.59	2,706.34	n/a
East Ayrshire	47,506.55	2	37.40	32,332.08	15,174.47	n/a
East Dunbartonshire	1,493.98	30	8.56	228.87	2.46	n/a
East Lothian	31,916.42	32	45.53	4,169.02	15.27	n/a
Falkirk	6,519.88	4	20.70	1,978.57	975.10	n/a
Fife	37,441.31	22	27.25	7,260.14	0.20	n/a
Glasgow City	3,679.08	214	20.85	610.19	0.01	n/a
Highland	599,074.89	28	22.63	92,332.44	867.92	n/a
Midlothian	20,855.46	7	58.70	6,791.91	834.00	n/a
Moray	92,086.92	8	40.80	3,659.20	78.43	n/a
North Ayrshire	42,333.97	7	46.83	24,291.54	8.60	n/a
North Lanarkshire	801.52	1	1.70	801.52	801.52	n/a
Perth and Kinross	145,757.48	11	26.90	34,195.64	5,015.12	n/a
Scottish Borders	153,114.08	9	32.28	53,569.09	4,469.30	n/a
Shetland Islands	28,872.99	17	17.43	4,243.00	271.65	n/a
South Ayrshire	72,731.00	2	58.91	70,183.64	2,547.37	n/a
South Lanarkshire	68,507.62	6	38.62	23,579.87	1,314.25	n/a
Stirling	54,200.62	8	24.04	24,856.76	265.91	n/a
West Dunbartonshire	6,439.50	1	35.23	6,439.50	6,439.50	n/a
West Lothian	15,831.54	36	36.68	7,285.73	0.58	n/a

Note that all figures have been rounded up to two decimal points.

Annex 3 - Map of Local Landscape Designations in 2017 with National Parks and National Scenic Areas

Local Landscape Areas, National Scenic Areas and National Parks in Scotland

